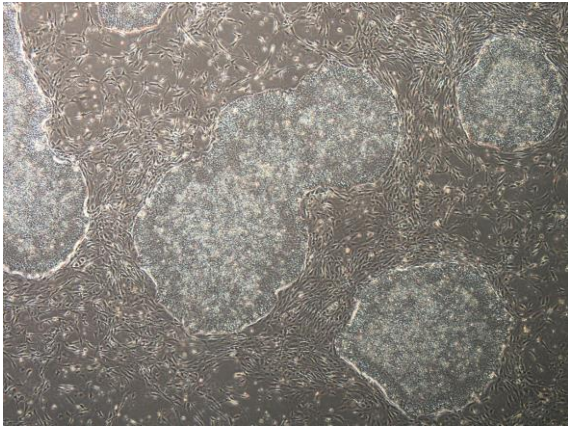
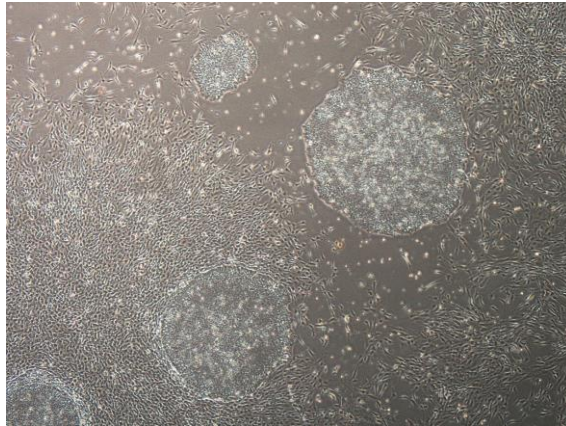


【 CiRA-j-1608 】 Morphology of iPSC colonies

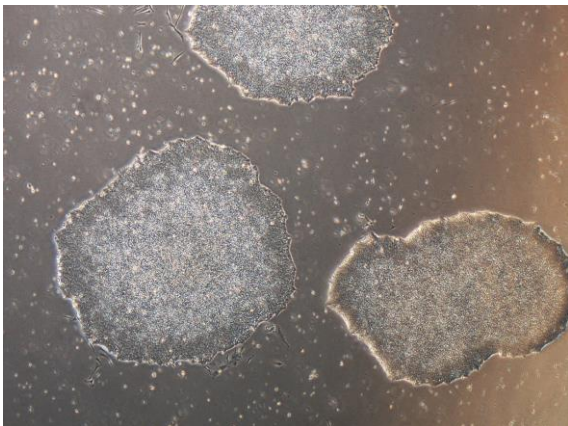
CiRA-j-1608-A: passage-3



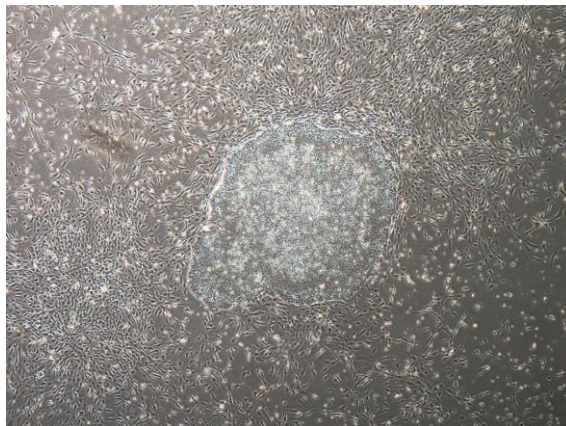
CiRA-j-1608-B: passage-3



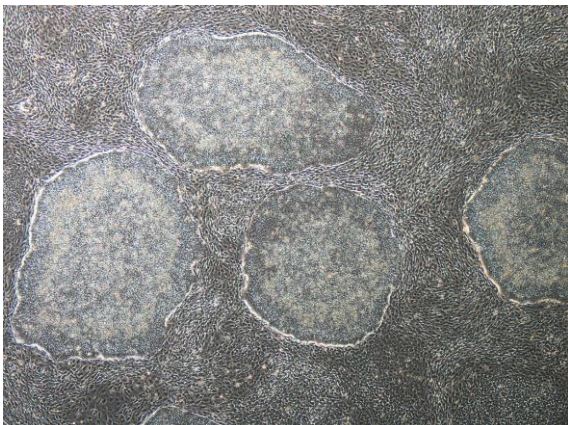
CiRA-j-1608-C: passage-3



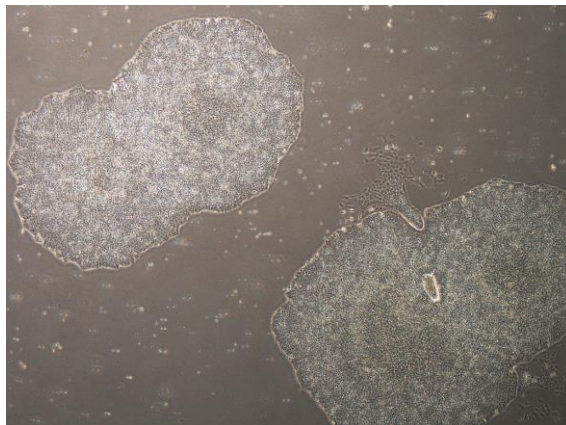
CiRA-j-1608-D: passage-3



CiRA-j-1608-E: passage-3



CiRA-j-1608-F: passage-4



(All images were captured at 4x magnification)